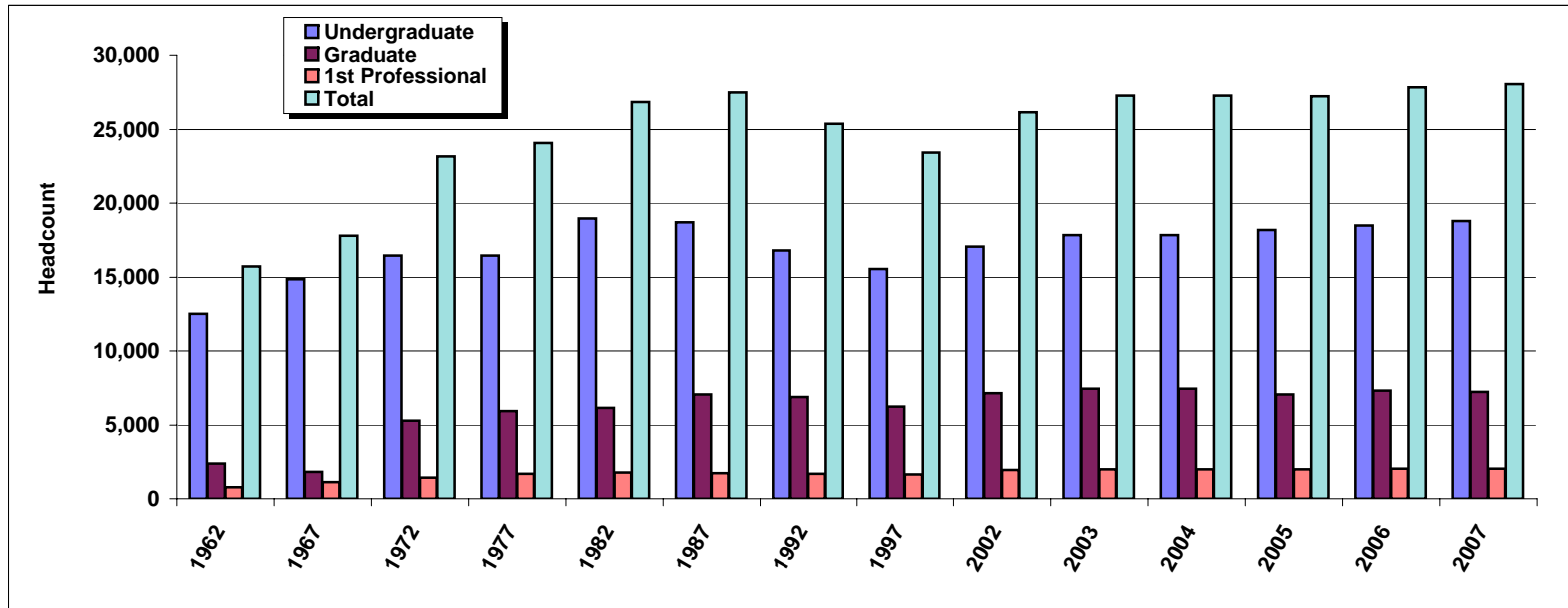


Fall Headcount Enrollment by Level



Fall Enrollment

Level	1962	1967	1972	1977	1982	1987	1992	1997	2002	2003	2004	2005	2006	2007
Undergraduate	12,529	14,853	16,429	16,466	18,951	18,714	16,785	15,552	17,054	17,818	17,838	18,165	18,506	18,779
Graduate	2,387	1,814	5,278	5,915	6,129	7,036	6,873	6,232	7,157	7,440	7,457	7,058	7,304	7,245
1st Professional	798	1,128	1,445	1,696	1,759	1,727	1,704	1,645	1,957	1,997	1,981	1,997	2,013	2,030
Total	15,714	17,795	23,152	24,077	26,839	27,477	25,362	23,429	26,168	27,255	27,276	27,220	27,823	28,054

1st Professional includes the following: DDS, JD, LLM, MD, PHARMD
 Starting in 2002, each year is being reported.